













Computer Skills: Switch on and Shutdown

| | | |
|---|--|--|
| Aim: Use technology safely and respectfully. Children will learn to turn on and shutdown computing equipment safely. I can switch on and shutdown a computer. | Success Criteria: I can name the main components of a computer. I can explain the differences between switching and logging on and off. | Resources: Lesson Pack Desktop computers /laptops Sticky notes |
| | Key/New Words: Monitor, display, keyboard, mouse, trackpad, system unit, headphones, switch. | Preparation: None needed |

Prior Learning: Children will have learnt to use a mouse or a trackpad in lesson 1.

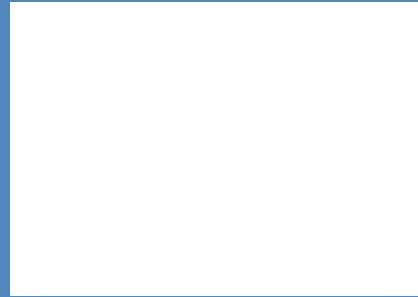
Learning Sequence

| | | |
|--|---|---|
|  | The Desktop Computer / The Laptop: What are the main components of a desktop computer and laptop? Show (using real components as well as the Lesson Presentation) the children the components. (Computer is used as a collective term for the whole set of components. The monitor, the physical unit, is distinguished from the display/screen, the part that displays the image. The system unit in a desktop is the box with the processing parts of the computer. Other names are sometimes used.) |  |
|  | Label It: Children are given some sticky notes to label the main components of the computers they will use: monitor, display, keyboard, mouse, trackpad, system unit, headphones and switch. |  |
|  | Switch On: Demonstrate how to turn on the computers the children will use. (With a desktop it is useful to turn the monitor on first, in case the system unit is already on.) Point out any relevant power lights indicating something is on or off. Log On: Demonstrate how to log on. Ensure children use 'tab' and 'enter' when logging on so they don't move hands back and forth from mouse to keyboard. Log Off: Demonstrate log off. (Depending on how the network in school is set up it may be possible to log off using 'ctrl' + 'alt' + 'del' then 'enter'. It depends on the options given after 'ctrl' + 'alt' + 'del'. For some users this process would lock the computer rather than log off.) |  |
|  | Log On and Log Off: Children practise switching on (once), logging on and logging off. |  |
|  | Shut Down: Demonstrate how to shut down and ensure children know the procedure for finishing a lesson. |  |
|  | At the End of the Lesson... Children should leave the computers as they are expected at the end of every lesson. (It is possible to edit the lesson presentation to list the required routine). |  |

Taskit

Switchit: Give certain children the job of switching on classroom computers.

Challengeit: Use the _____ for extension activities.



Computing

Computer Skills

Switch On and Shut Down



Aim

- I can switch on and shutdown a computer.

Success Criteria

- I can name the main components of a computer.
- I can explain the differences between switching on and off and logging on and off.

The Desktop Computer

What are the main parts of a desktop computer called?

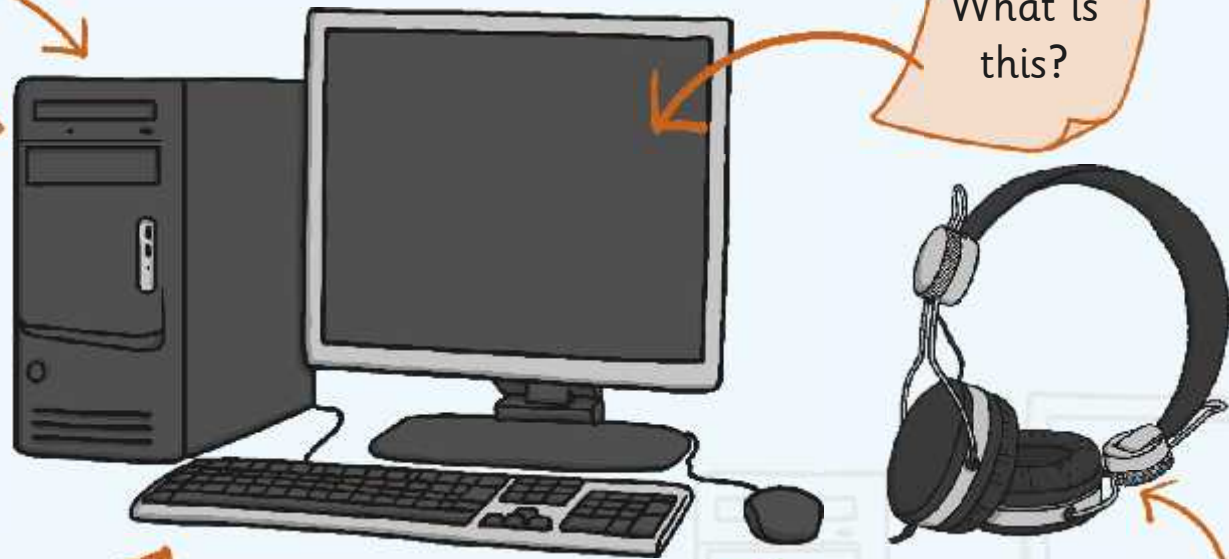
What is this?

What is this?

What is this?

What is this?

What is this?



The Desktop Computer

What are the main parts of a desktop computer called?

computer
system
unit

monitor
with display
or screen

keyboard

mouse

headphones

The Laptop

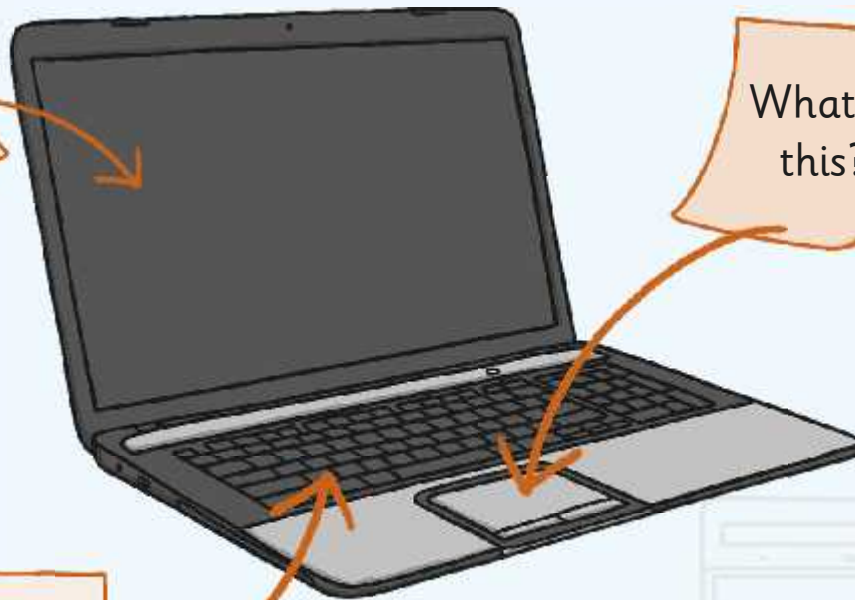
What are the main parts of a laptop called?

What is this?

What is this?

What is this?

What is this?



The Laptop

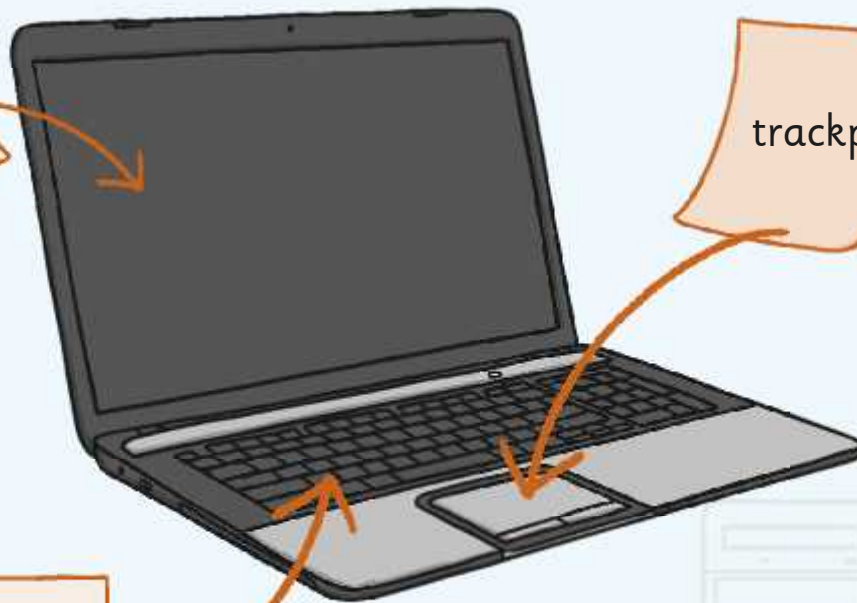
What are the main parts of a laptop called?

Display
or screen

trackpad

keyboard

headphones



Label It



Using sticky notes, label the main components of your computer.

monitor

display

keyboard

mouse

trackpad

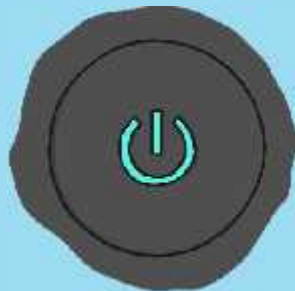
headphones

system
unit

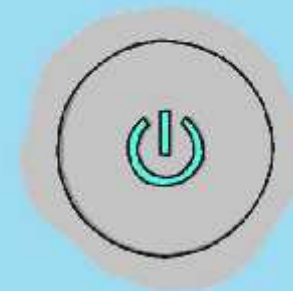
switch

Switch On

1: Switch the monitor on first.



2: Then, switch on the computer system unit.



Log On

Remember to log on
without using the mouse.

Press CTRL + ALT + DELETE to log on

At this screen hold down
'ctrl' + 'alt' and 'del'.



Type user name.

An illustration of a login form with two input fields: 'User Name' and 'Password'. An orange arrow points to the 'User Name' field. A green arrow icon is visible to the right of the 'Password' field.

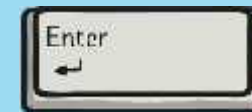
Press <tab>



Type password.

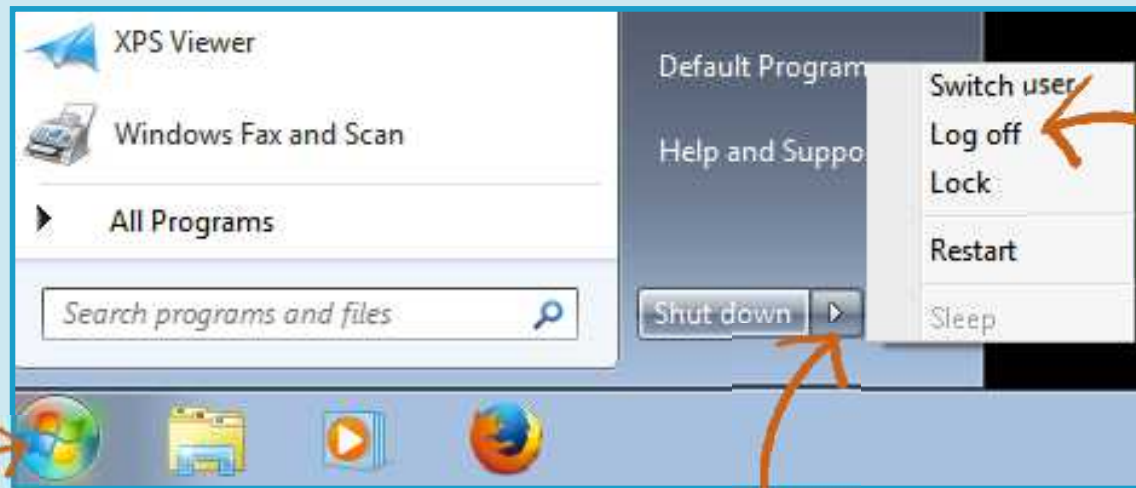
An illustration of a login form with two input fields: 'User Name' and 'Password'. The 'User Name' field contains the text 'Owen'. An orange arrow points to the 'Password' field. A green arrow icon is visible to the right of the 'Password' field.

Press <enter>



Log Off

At the end of the session log off.



1. Click the start button.

2. Click the arrow next to shutdown.

3. Click 'Log Off'.

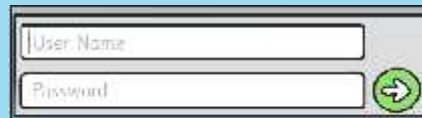
Logging On and Off



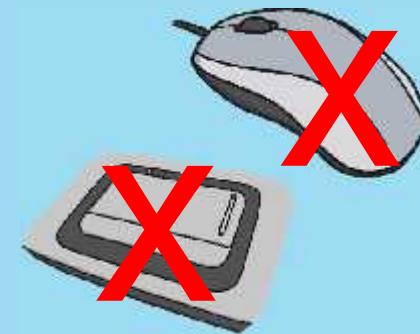
Switch on
your
computer.



Practise
logging on and
logging off.

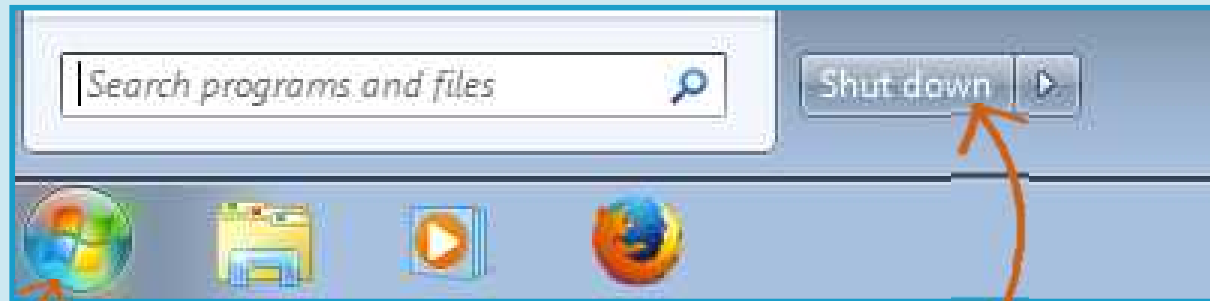


Don't use
the mouse
or trackpad.



Shut Down

We almost never turn a computer off with the power button.



Click the start button.

Click the arrow
next to shutdown.

At the End of a Lesson...



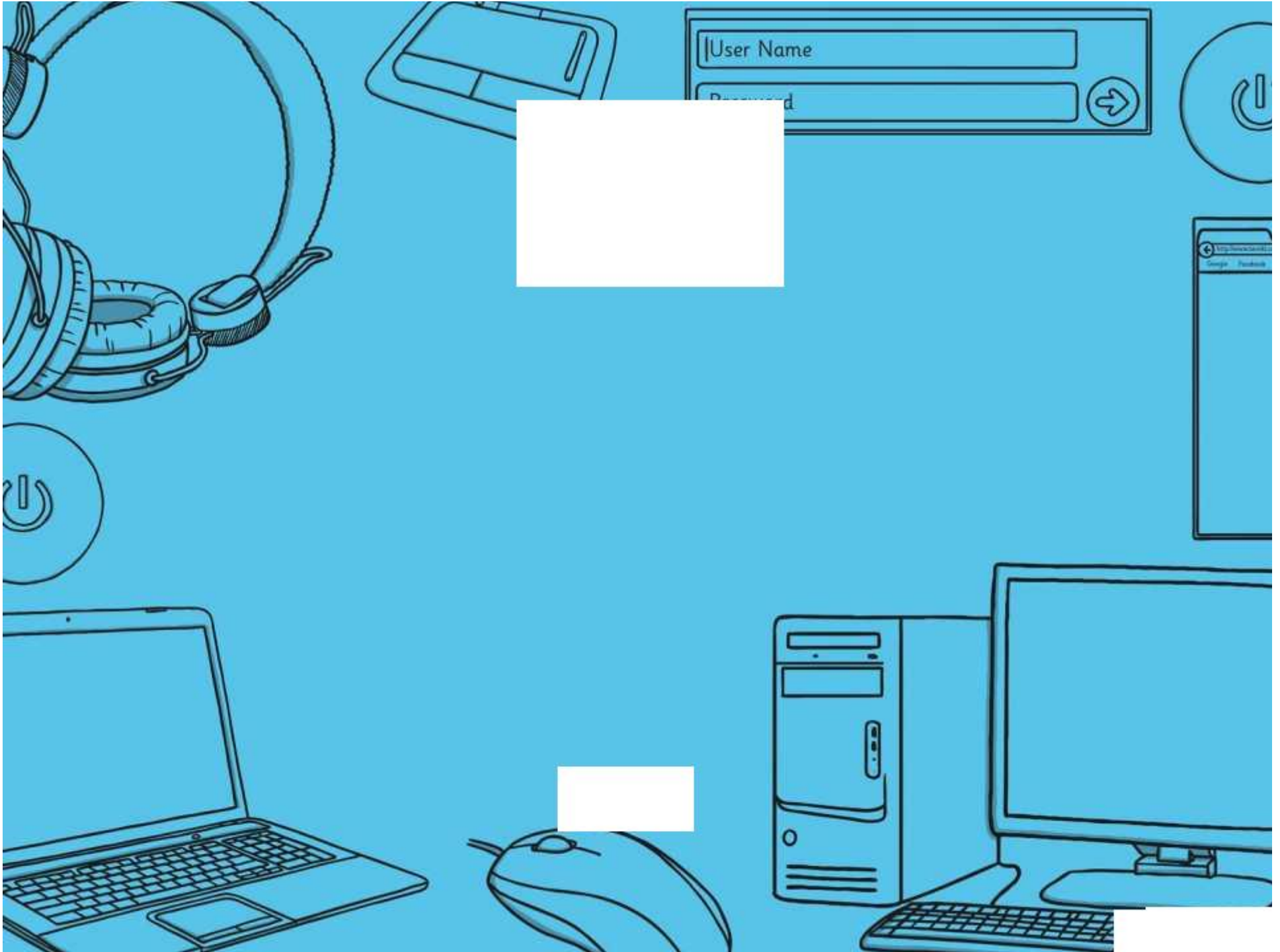
Aim



- I can switch on and shutdown a computer.

Success Criteria

- I can name the main components of a computer.
- I can explain the differences between switching on and off and logging on and off.



Computer Skills | Switch on and Shutdown

| | | |
|---|--|--|
| I can switch on and shutdown a computer. | | |
| I can name the main components of a computer. | | |
| I can explain the differences between switching and logging on and off. | | |

Computer Skills | Switch on and Shutdown

| | | |
|---|--|--|
| I can switch on and shutdown a computer. | | |
| I can name the main components of a computer. | | |
| I can explain the differences between switching and logging on and off. | | |

Computer Skills | Switch on and Shutdown

| | | |
|---|--|--|
| I can switch on and shutdown a computer. | | |
| I can name the main components of a computer. | | |
| I can explain the differences between switching and logging on and off. | | |

Computer Skills | Switch on and Shutdown

| | | |
|---|--|--|
| I can switch on and shutdown a computer. | | |
| I can name the main components of a computer. | | |
| I can explain the differences between switching and logging on and off. | | |

Computer Skills | Switch on and Shutdown

| | | |
|---|--|--|
| I can switch on and shutdown a computer. | | |
| I can name the main components of a computer. | | |
| I can explain the differences between switching and logging on and off. | | |

Computer Skills | Switch on and Shutdown

| | | |
|---|--|--|
| I can switch on and shutdown a computer. | | |
| I can name the main components of a computer. | | |
| I can explain the differences between switching and logging on and off. | | |

Computer Skills | Switch on and Shutdown

| | | |
|---|--|--|
| I can switch on and shutdown a computer. | | |
| I can name the main components of a computer. | | |
| I can explain the differences between switching and logging on and off. | | |

Computer Skills | Switch on and Shutdown

| | | |
|---|--|--|
| I can switch on and shutdown a computer. | | |
| I can name the main components of a computer. | | |
| I can explain the differences between switching and logging on and off. | | |

Computer Skills

Switch on and Shut down



Computer Skills

Switch on and Shut down



Computer Skills

Switch on and Shut down



Computer Skills

Switch on and Shut down



Draw a picture of your classroom computer and write down the names of the main components.



Practise logging on and off without using the mouse.



Find the power switches on different computer system units and monitors and draw them.



Draw a picture of your classroom computer and write down the names of the main components.



Computer Skills

Switch on and Shut down



Computer Skills

Switch on and Shut down



Computer Skills

Switch on and Shut down



Computer Skills

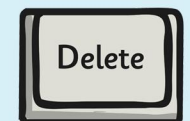
Switch on and Shut down



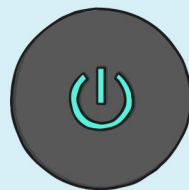
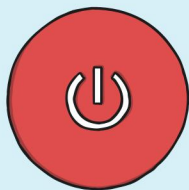
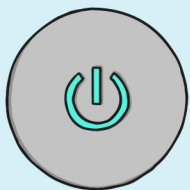
Draw a picture of your classroom computer and write down the names of the main components.



Practise logging on and off without using the mouse.



Find the power switches on different computer system units and monitors and draw them.



Draw a picture of your classroom computer and write down the names of the main components.

